

ABSEIL ACCESS LTD

Reference Project

Concrete condition - Inspection and repairs

Location: Manapouri underground hydro Power Station.

Date: 2003 ongoing

Client: Meridian Energy

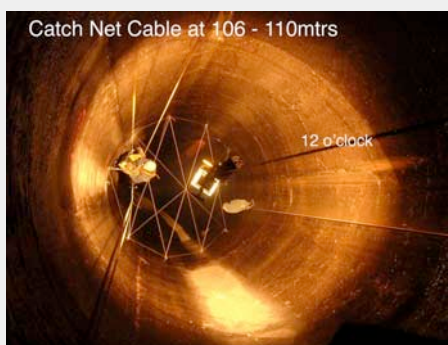
Consultant: Les Topping



This underground station has 7 200m vertical penstocks through rock to feed the underground turbines. As part of the 30 year Half Life Refurbishment Project the penstocks required a concrete condition survey. They are lined with slipformed concrete and steel.

Abseil Access Ltd were contracted to visually map the internal surface of each penstock for the full 200m height. All defect sites were measured and recorded. 100mm core samples were taken up to 300mm deep for further analysis. Marker pins were installed at key positions for future laser measurements.

The inspection project required a multitude of demanding disciplines including operating lasers, dyna and core drills, in the dark, 200m down a underground vertical wet shaft.



Catch Net Cable at 106 - 110mtrs

12 o'clock



ABSEIL ACCESS LTD

15 Bute Street

P.O. Box 10717, Wellington

Phone and Fax: 04 801 5336

www.abseilaccess.co.nz

info@abseilaccess.co.nz

DJ Matheson 0274 449 774

djmatheson@abseilaccess.co.nz

Martin Wilson 0274 495 408

mwilson@abseilaccess.co.nz