

# ABSEIL ACCESS LTD

## Reference Project

### Demolition - 122m Guyed Radio mast

Location: Titahi bay, Wellington.

Date: 2005

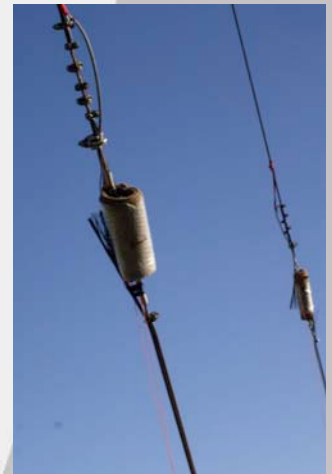
Client: Radio New Zealand

Radio New Zealand contracted Abseil Access Ltd to demolish a 122m high radio mast. Abseil Access' unique combination of engineering, height safety training and explosive expertise were ideal for this project.

The 3 northern guys had to be severed simultaneously for the mast to fall evenly to the south. In order to protect the electronics hut at the base the cables had to cut 30m in the air. Due to the urban location explosive disturbance and shrapnel had to be eliminated.

Explosive linkages were installed in place of sections of the cable 30m in the air. The weight was transferred to the link as the 25mm cables were cut. The links were designed and individually tested to hold 80kN yet fracture with only 5g of explosive. Six Nonel (non-electric) detonators were set in pairs to ensure full initiation.

The contract included removal and replacement of the two perimeter security fences as well as safe management of the site and a viewing area on demolition day.



ABSEIL ACCESS LTD

15 Bute Street

P.O. Box 10717, Wellington

Phone and Fax: 04 801 5336

[www.abseilaccess.co.nz](http://www.abseilaccess.co.nz)

[info@abseilaccess.co.nz](mailto:info@abseilaccess.co.nz)

DJ Matheson 0274 449 774

[djmatheson@abseilaccess.co.nz](mailto:djmatheson@abseilaccess.co.nz)

Martin Wilson 0274 495 408

[mwilson@abseilaccess.co.nz](mailto:mwilson@abseilaccess.co.nz)

