

# ABSEIL ACCESS LTD

## Reference Project

### Suspension Bridge Construction

Location: Heaphy River,  
Kahurangi National Park

Date: November 2012

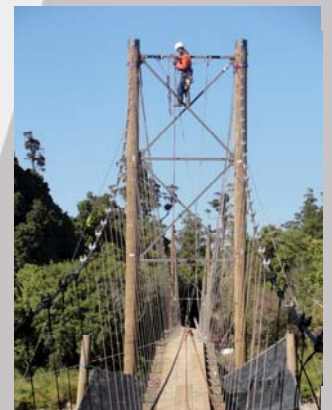
Client: Department of Conservation  
Te Papa Atawhai

Abseil Access won the contract for the construction of the new bridge crossing the Heaphy River near the Lewis Hut on the Heaphy Track – one of the Great Walks.

The old bridge was washed away in flood and in order to achieve re-construction prior to the summer season Department of Conservation tendered out the super-structure construction only. With 150m of deck the new bridge is one of the longest suspended decks in New Zealand.

The main cables are supported by 11m high timber pole towers. The deck spans the riverbank flood zones as well as arching upwards mid span to allow for high water clearance.

25 tons of timber and stainless steel components were pre-prepared and flown in to the site from Karamea. The five-man team completed construction in 14 days, well ahead of the projected timeframe.



ABSEIL ACCESS LTD  
15 Bute Street  
P.O. Box 10717, Wellington  
Phone and Fax: 04 801 5336  
[www.abseilaccess.co.nz](http://www.abseilaccess.co.nz)  
[info@abseilaccess.co.nz](mailto:info@abseilaccess.co.nz)

DJ Matheson 0274 449 774  
[djmatheson@abseilaccess.co.nz](mailto:djmatheson@abseilaccess.co.nz)

Martin Wilson 0274 495 408  
[mwilson@abseilaccess.co.nz](mailto:mwilson@abseilaccess.co.nz)

