

ABSEIL ACCESS LTD

Reference Project

Geotechnical – Rock Fall Protection

Location: Normanby Rd, Lower Hutt

Date: May 2010

Client: Juno Civil / HCC

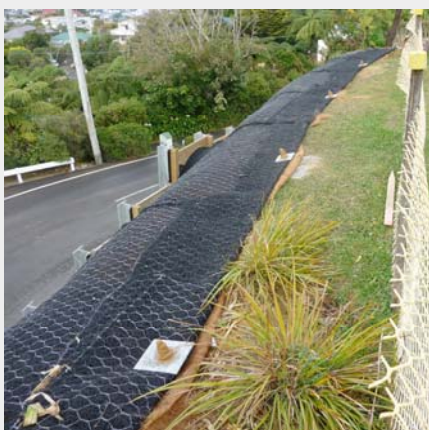
Engineers: GHD Lower Hutt

Normanby Road winds its way up through the hills behind Lower Hutt. Juno Civil Construction engaged Abseil Access Ltd to install a section of MacMat® R adjacent to the retaining wall. The design was by GHD engineers.

The excavated face exposed highly weathered sandstone. Maccaferri's MacMat® R was chosen due to its ability to reduce surface erosion and to promote vegetation growth.

The cut face was initially covered with Maccaferri coconut fibre matting. The 140m² of MacMat® R was secured by 26 RB20 rock bolts grouted into 50mm diameter holes 1.5m to 2.5m deep. An additional 15 300mm epoxy pins helped keep the matting snug to the face.

To ensure rapid revegetation of the slope, hyroseed was applied to the face after installation of the MacMat® R Geomat.



ABSEIL ACCESS LTD

15 Bute Street

P.O. Box 10717, Wellington

Phone and Fax: 04 801 5336

www.abseilaccess.co.nz

info@abseilaccess.co.nz

DJ Matheson 0274 449 774

djmatheson@abseilaccess.co.nz

Martin Wilson 0274 495 408

mwilson@abseilaccess.co.nz

